



ESPA Managed Recharge Program Update

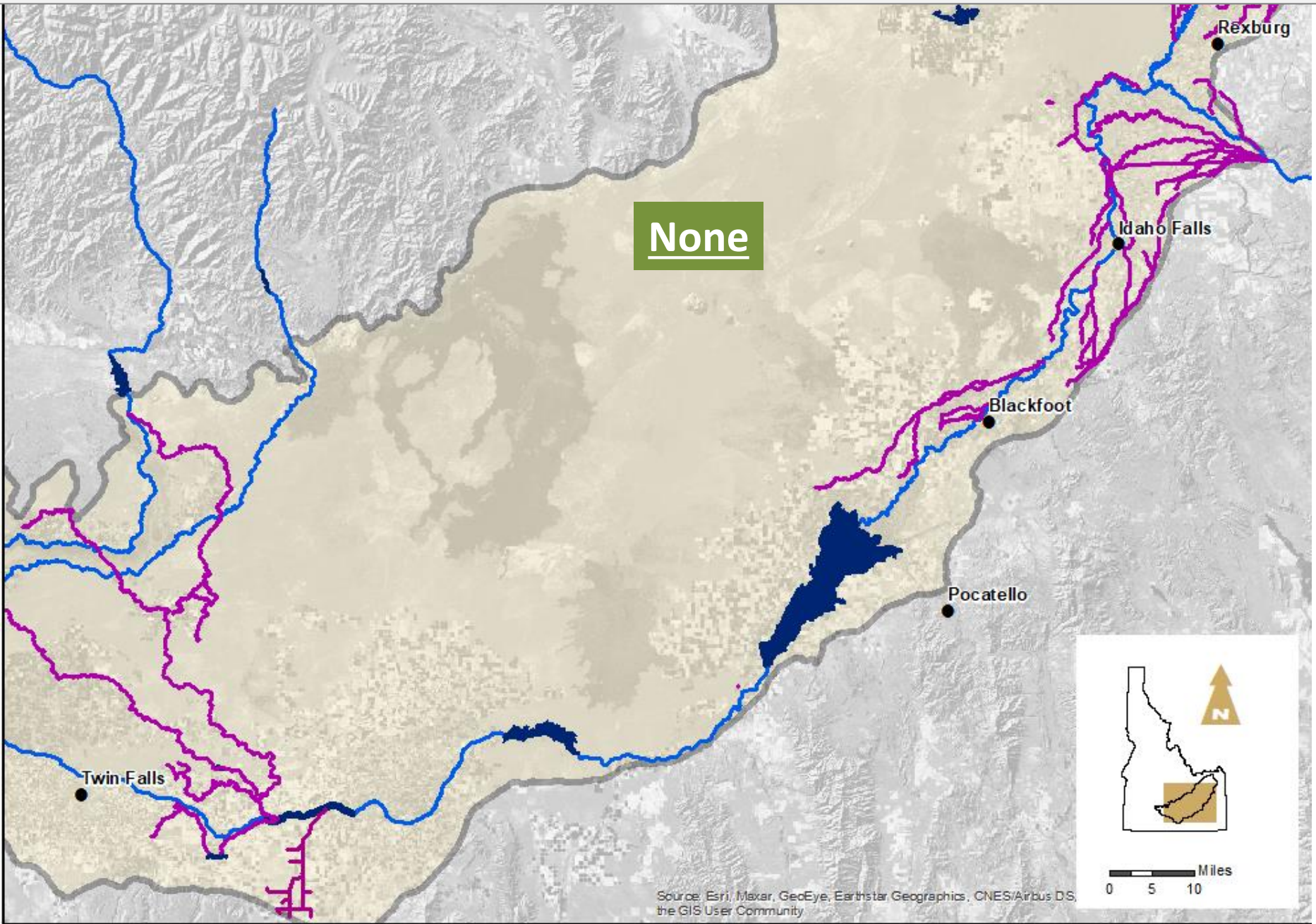
Environmental Resource Technical Working Group – Fall 2022

Neal Farmer

IWRB Recharge Program

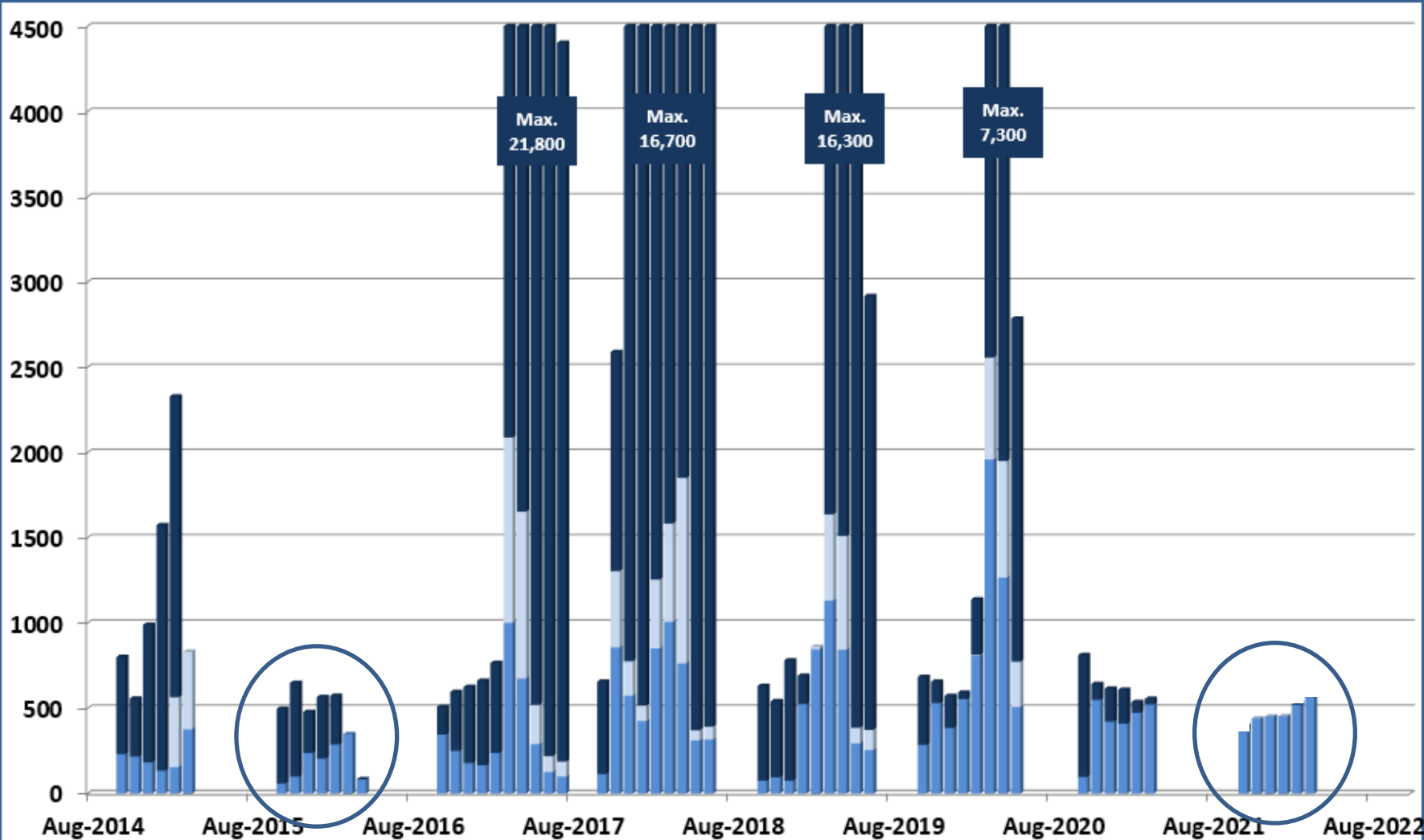
November 16, 2022

IWRB ESPA Managed Recharge for Others – Last Season



IWRB Natural Flow ESPA Recharge 2014 - 2021

Water Availability / Recharge (cfs)



■ LV Recharge
 ■ UV Recharge
 ■ Water Available

IWRB Natural Flow Managed Recharge – 2021/2022

Total IWRB Recharge
157,586 af

IWRB Diversion Rate
Max. 666 cfs
Med. 467 cfs

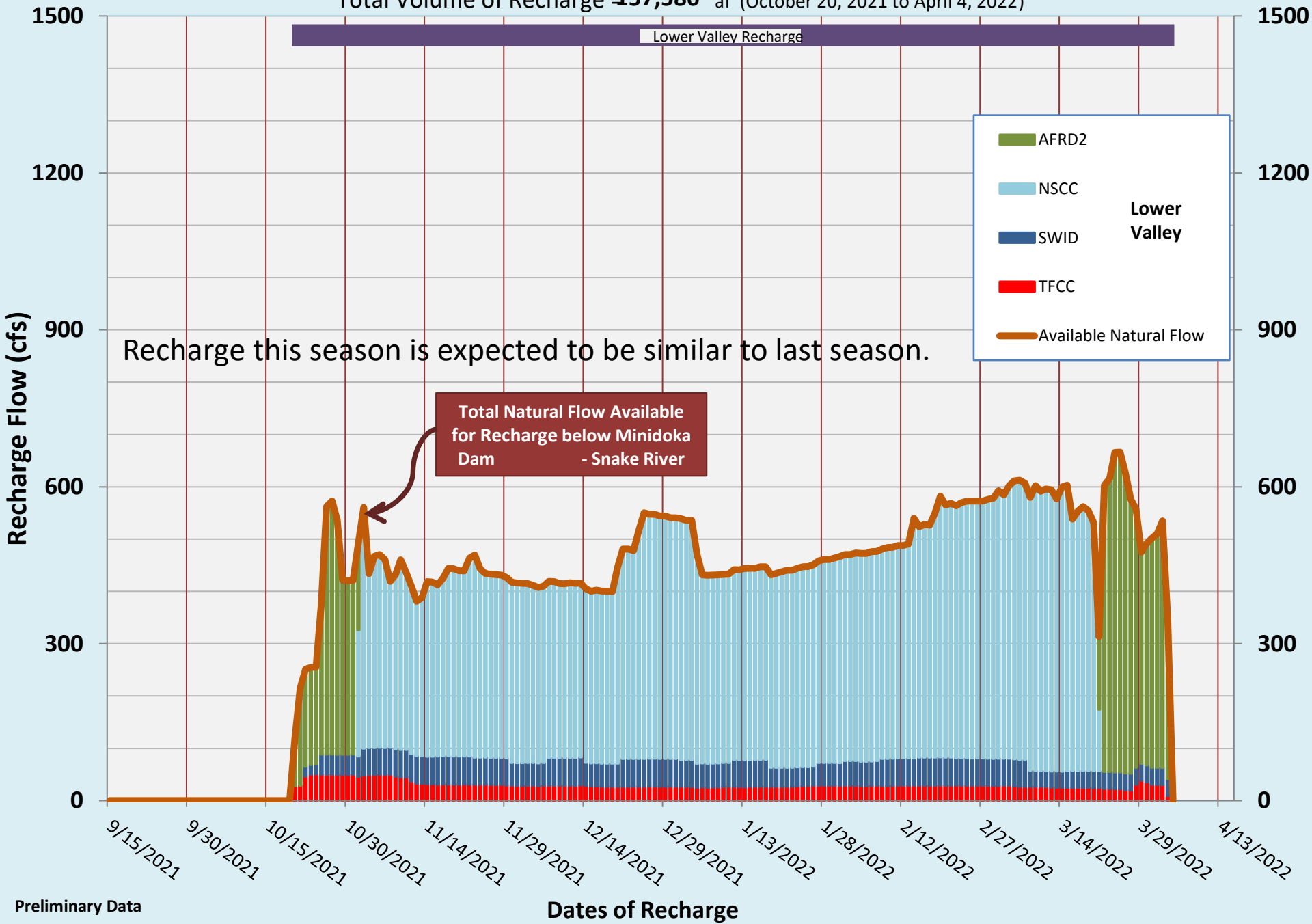
Aug. 1, 2021 – July 31, 2022 Season

Twin Falls



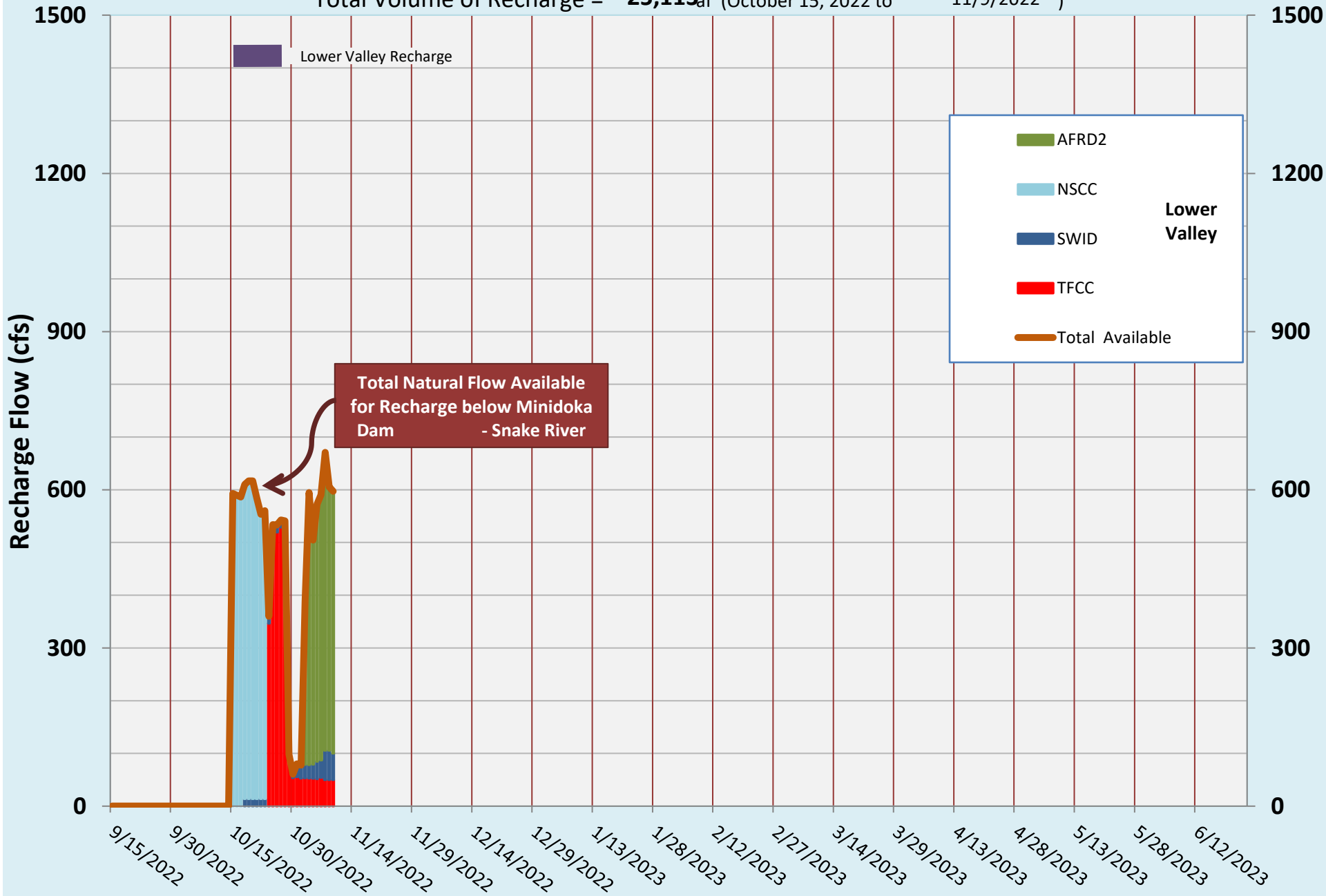
IWRB Natural Flow Recharge - 2021/2022 Season

Total Volume of Recharge **157,586** af (October 20, 2021 to April 4, 2022)



IWRB Natural Flow Recharge - 2022/2023 Season

Total Volume of Recharge = **25,113**af (October 15, 2022 to 11/9/2022)



IWRB Natural Flow Managed Recharge – 2022/2023

Total Natural Flow Water Recharged
25,113 af

Oct 15 to Nov. 9

Diversion Rate

Median: 557 cfs
Max: 671 cfs

AFRD2

7,546 AF

525 cfs

Twin Falls

NSCC

10,367 AF

TFCC

6,177 AF

42 cfs

SWID

1,023 AF

45 cfs



0 5 10 Miles

Source: Esri, Maxar, GeoEye, Earthstar Geographics, CNES/Airbus DS, the GIS User Community

NSCC Flow Rate Instrument and Telemetry Install at Wilson Canyon Recharge Site & Test



IDWR – Tito Sanabria
NSCC – Staff, Jesus Berrara

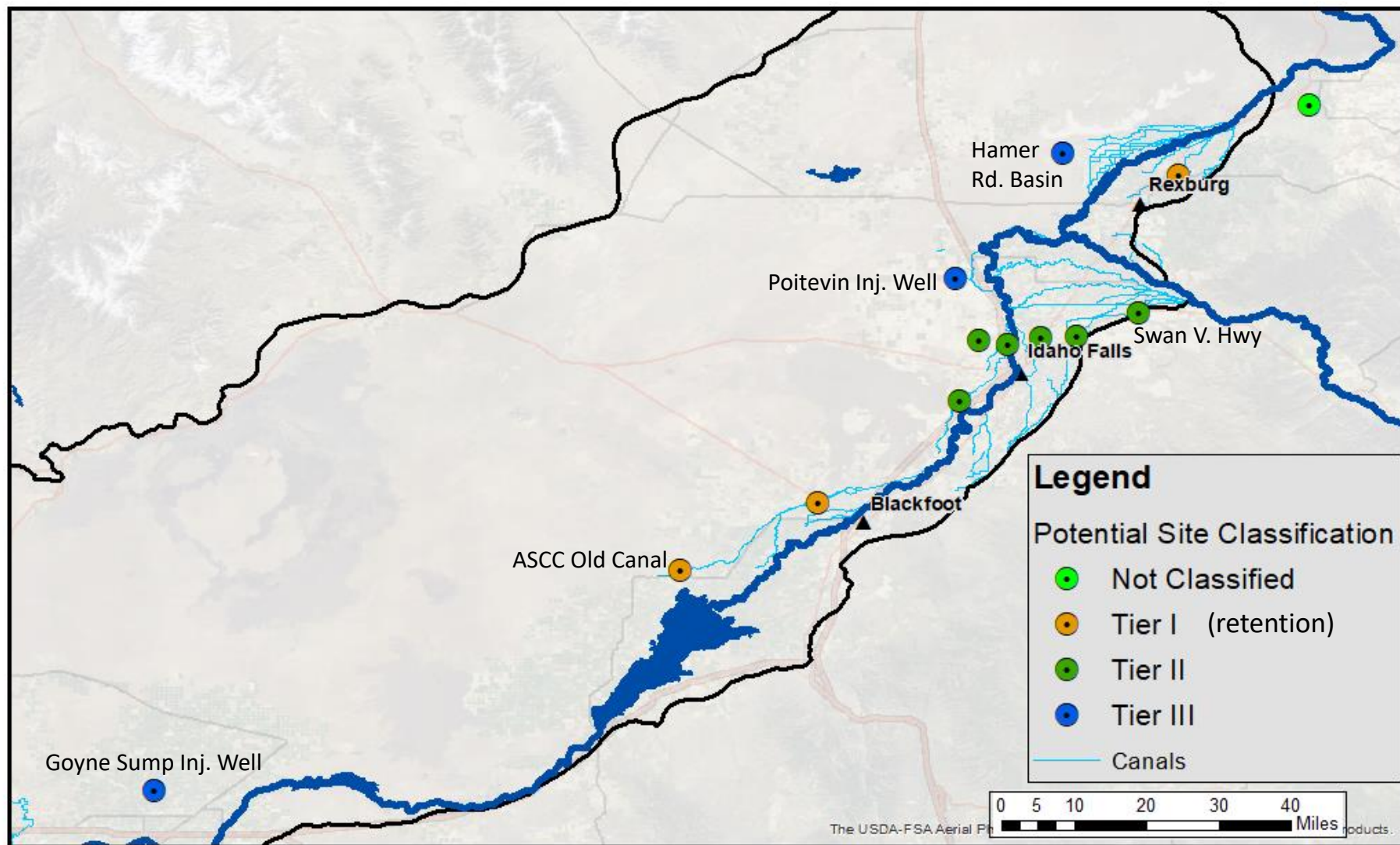
Frontier Precision Tech
Support – Steve Combe

SWID Flow Rate Instrument and Telemetry Troubleshooting.

Jaxon Higgs – SWID and Tito - IDWR



IWRB ESPA Recharge Project Site Development



Questions

